

MURABBI TALK SERIES

**Transformative Learning through
Community Engagement**

DATE: 22/10/2020

TIME: 10:00 AM - 12:00 PM

BY: HAMIDON ABD HAMID

FIDS-IRKHS



CONTENT

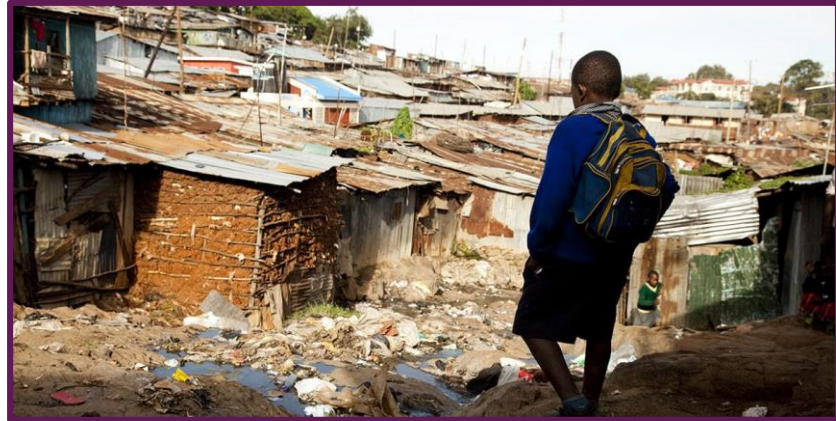
1. INTRODUCTION
2. AN URGENT
MATTER
3. TRANSFORMATIVE
LEARNING
4. COMMUNITY
ENGAGEMENT
5. THE WAY FORWARD

INTRODUCTION

The world is
suffering

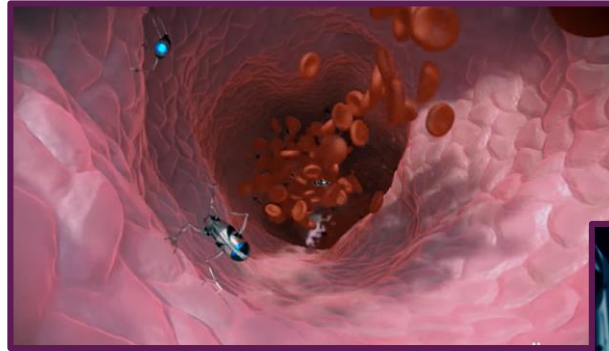


HUMAN SUFFRAGE



THE FUTURE: 2030?

“Scientific development is exponential and not linear” - Michio Kaku



AN URGENT MATTER

Educational Institutions must take up the task of producing “*global* citizens able to deal with today’s complex world and its complex problems” (Halupa, C)



TRANSFORMATIVE LEARNING

- “It is the process of affecting change in a frame of reference”
(Mezirow, J)
- A frame of reference includes mind habits as well as personal viewpoints based on beliefs and attitudes



DOMAINS OF TRANSFORMATION

1. COGNITIVE

- Multidisciplinary knowledge
- Reflective thinking

1. AFFECTIVE

- Values & Morality
- Emotions & Attitudes

1. BEHAVIOUR

- Intra & Inter



AN INTERESTING PIT-STOP: MAQAM VS 'ARDH

- 'ARDH is a passing attributes
- MAQAM is permanent and has become a behaviour
- MAQAM is a nexus of knowledge, conditions of the heart and amal

(Imam Al- Ghazali)



COMMUNITY ENGAGEMENT

- Community service
- Community engagement
- Community transformation



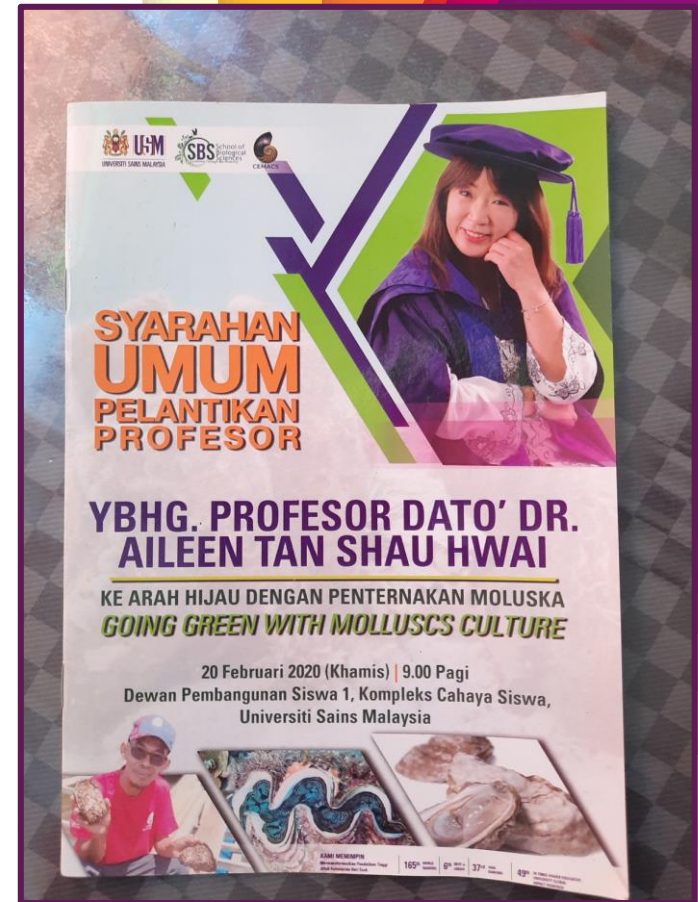
COMMUNITY ENGAGEMENT PROJECTS

- Multidisciplinary medical aspects
- Teaching of English & Mathematics



COMMUNITY TRANSFORMATION: Green Oyster Farming (USM)

- Knowledge of protecting environment as an ecosystem to ensure sustainability of farming
- Awareness of their role in the three pillars of sustainability: People profit and planet
- Increase in leadership commitment responsibility confidence open to ideas and acceptance of outside partners
- Community is more proficient in English since their kampung has become a tourist spot to eat fresh oysters



Kampong Chnang Transformation Project

It was/is a 5 pronged transformation project divided into three phases

- Infrastructure
- Education
- Pedagogy
- Androgogy
- Health & Wellness (BUMICA)
- Economic Sustainability
- Mental Transformation



KAMPONG CHNANG: A HOUSE FOR ABDUL RAZAK & ZALIKHA



TRANSFORMATIVE ELEMENTS IN COMMUNITY ENGAGEMENT

- Cognitive aspects
 - Language
 - Child & Adult Psychology
 - Thinking Skills
 - New Specialize Knowledge
- Affective
 - Sympathy to Empathy
 - Generosity & Altruistic Behaviour
 - Content with Basic Necessities
 - Patience & Industry
- New Skills



THE WAY FORWARD

- “ The best among you is the one of most benefit to the people” (Hadith)
- Institutional
- Personal





“

THANK
YOU